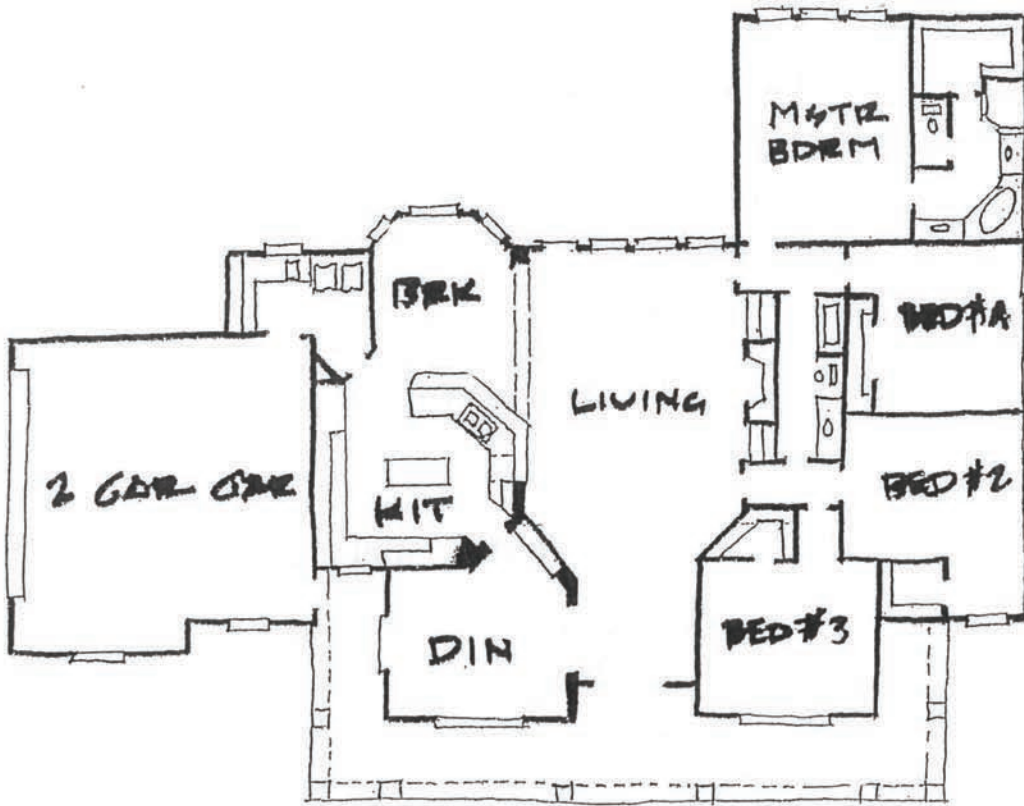


San Marcos

San Marcos

4 BEDROOMS
2 BATHROOMS

2,275 S.F. LIVING
335 S.F. PORCH
464 S.F. GARAGE
3,074 S.F. TOTAL



*Floor plans and elevations are artists renderings.
Actual plans, elevations and dimensions may vary.*

Superior Homes Custom, Inc.

(936) 228-0990

10075 Interstate 45 North
Conroe, Texas 77304
www.superiorhomescustom.com